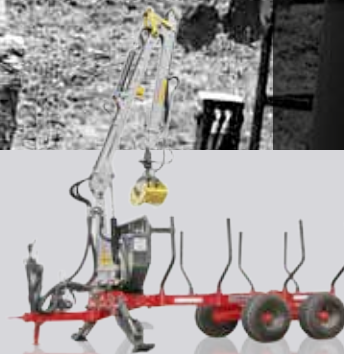




**CARICATORI  
FORESTALI  
FORESTAL  
LOADERS**



# SERIE Z

## *SERIES Z*

<b>IB2600</b>	<b>6</b>
<b>IB3600</b>	<b>7</b>
<b>IB35Z.60</b>	<b>8</b>
<b>IB4600</b>	<b>9</b>
<b>IB6600</b>	<b>10</b>
<b>IB7600</b>	<b>11</b>
<b>IB9000</b>	<b>12</b>



ICBP BAZZOLI

Dal 1952 La nostra storia  
Our history since 1952

# 1952



## **SERIE L** ***SERIES L***

<b>IB2800</b>	<b>16</b>
<b>IB4800</b>	<b>18</b>
<b>IB6800</b>	<b>19</b>
<b>IB7800</b>	<b>20</b>
<b>IB9800</b>	<b>21</b>
<b>ACCESSORI / ACCESSORIES</b>	<b>22</b>
<b>PINZE E ROTATORI GRAPPLER AND ROTATORS</b>	<b>26</b>



**DOMEX**<sup>®</sup>  
HIGH STRENGTH STEEL

**STRENX**<sup>™</sup>  
PERFORMANCE STEEL

Caricatori con braccio ripieghevole a "z" per ridurre al minimo l'ingombro durante il trasferimento su strada.

Concepiti e progettati per durare nel tempo costruiti con i migliori acciai antisnervamento DOMEX 700, resistenti alle sollecitazioni estreme e alle piu' sfavorevoli condizioni ambientali. Collaudati per garantire la massima affidabilita', con notevole capacita' di sollevamento ad elevate velocita' di lavoro.

**N.B: verniciatura standard colore grigio RAL 7004 e RAL 7021. A richiesta verniciatura con altri colori RAL.**

## SERIES Z



*Loaders with a Z-shape, folding jib to reduce to the minimum the overall dimension during transport on roads.*

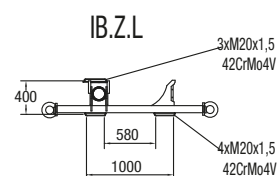
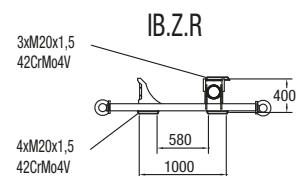
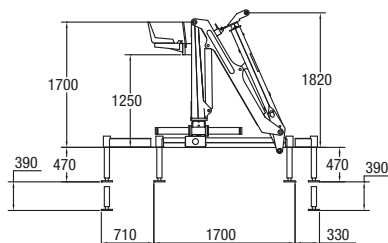
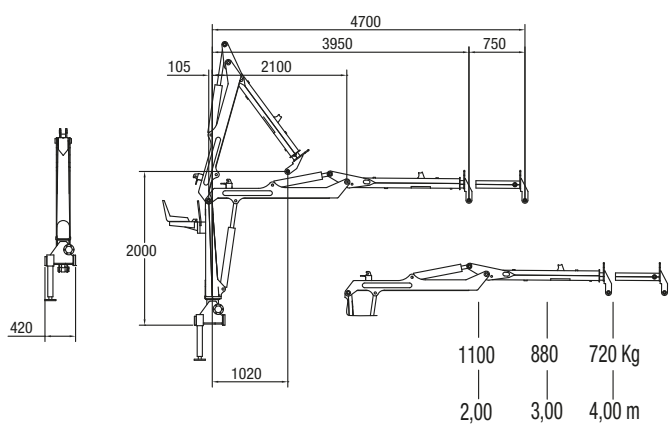
*Designed to guarantee great reliability over time, they are constructed with the best anti-yield steels DOMEX 700, resistant to the extreme stresses and to the worst environmental conditions. They are tested to guarantee great reliability over time, with a great lifting capacity even while working at high speed.*

**Note: standard painting grey RAL 7004 e RAL 7021. Upon request painting with other RAL colors.**

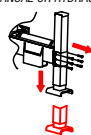


# IB2600

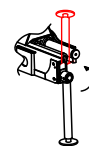
CARATTERISTICHE TECNICHE / Technical features	IB2600.Z47
Momento di carico netto / Max moment	30 KNm
Coppia di rotazione netto / Net rotation torque	10 KNm
Angolo di rotazione / Rotation angle	400°
Sbraccio massimo / Max overhang	4,70 m
Pressione di esercizio / Service pressure	170 Bar
Portata raccomandata della pompa / Recommended flow of the pump	30 lt/min
Peso del caricatore \ gru (escluso attrezzature terminali) / Weight of the crane (without terminal equipments)	580 Kg



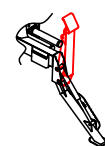
STABILIZZATORI ESTENSIBILI  
"FORESTRY" MANUALI O IDRAULICI  
STABILIZERS EXTENSIBLE "FORESTAL"  
MANUAL OR HYDRAULIC



STABILIZZATORI VERSIONE "TRUCK"  
STABILIZERS "TRUCK"



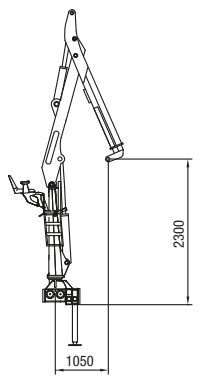
STABILIZZATORI "FLAP DOWN"  
STABILIZERS "FLAP DOWN"



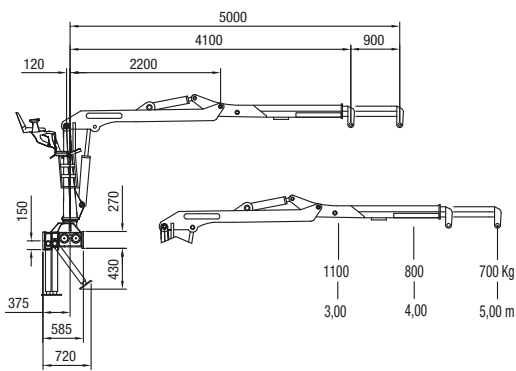
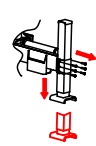
**CARATTERISTICHE TECNICHE / Technical features**

Momento di carico netto / Max moment	35 KNm
Coppia di rotazione netto / Net rotation torque	15 KNm
Angolo di rotazione / Rotation angle	400°
Sbraccio massimo / Max overhang	5,00 m
Pressione di esercizio / Service pressure	190 Bar
Portata raccomandata della pompa / Recommended flow of the pump	35 lt/ 45 min
Peso del caricatore \ gru (escluso attrezzature terminali) Weight of the crane (without terminal equipments)	900 Kg

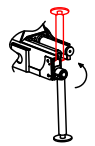
# IB3600



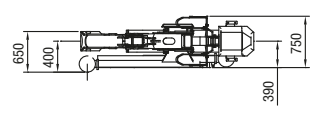
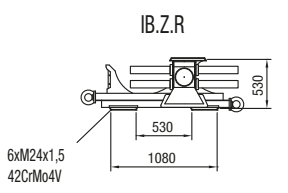
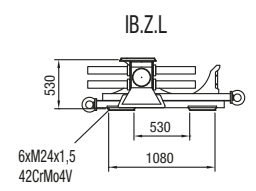
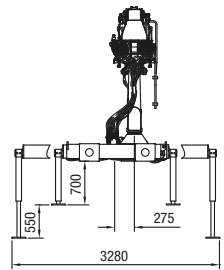
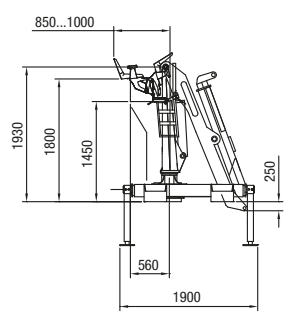
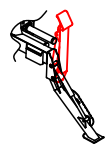
STABILIZZATORI ESTENSIBILI  
"FORESTRY" MANUALI O IDRAULICI  
STABILIZERS EXTENSIBLE "FORESTAL"  
MANUAL OR HYDRAULIC



STABILIZZATORI VERSIONE "TRUCK"  
STABILIZERS "TRUCK"

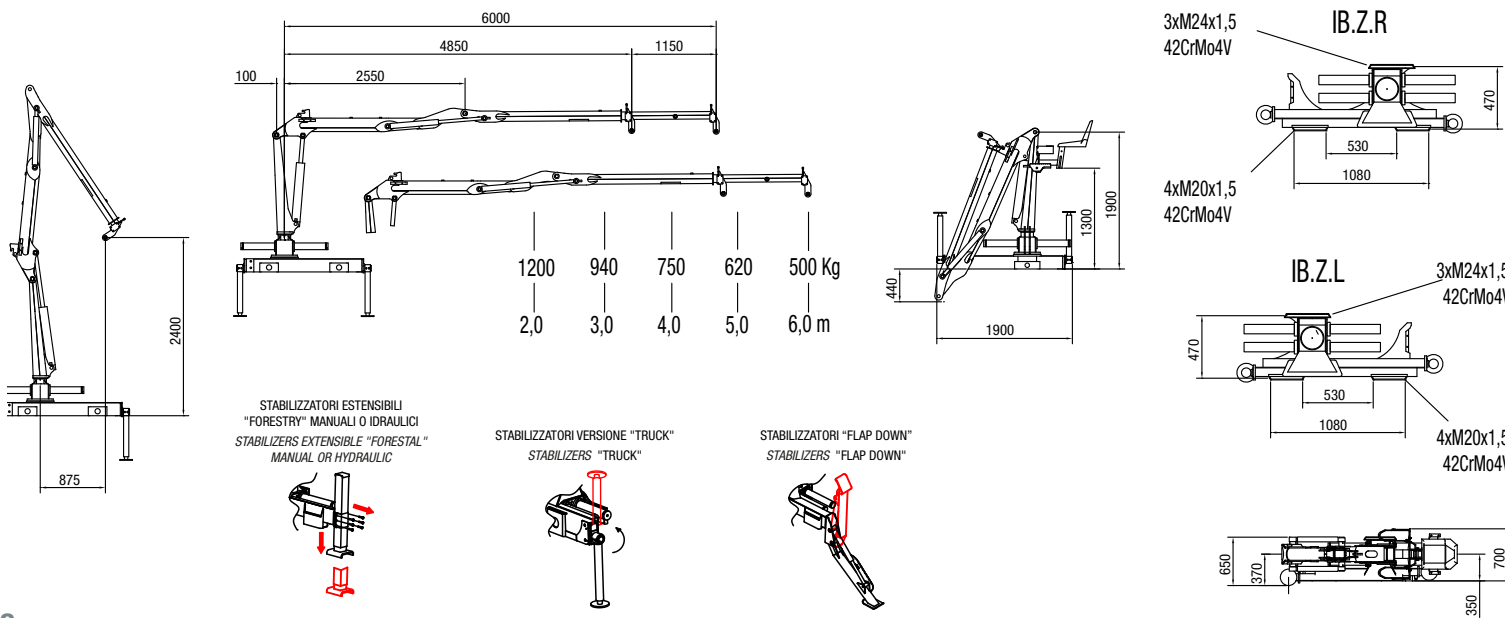


STABILIZZATORI "FLAP DOWN"  
STABILIZERS "FLAP DOWN"



# IB35Z.60

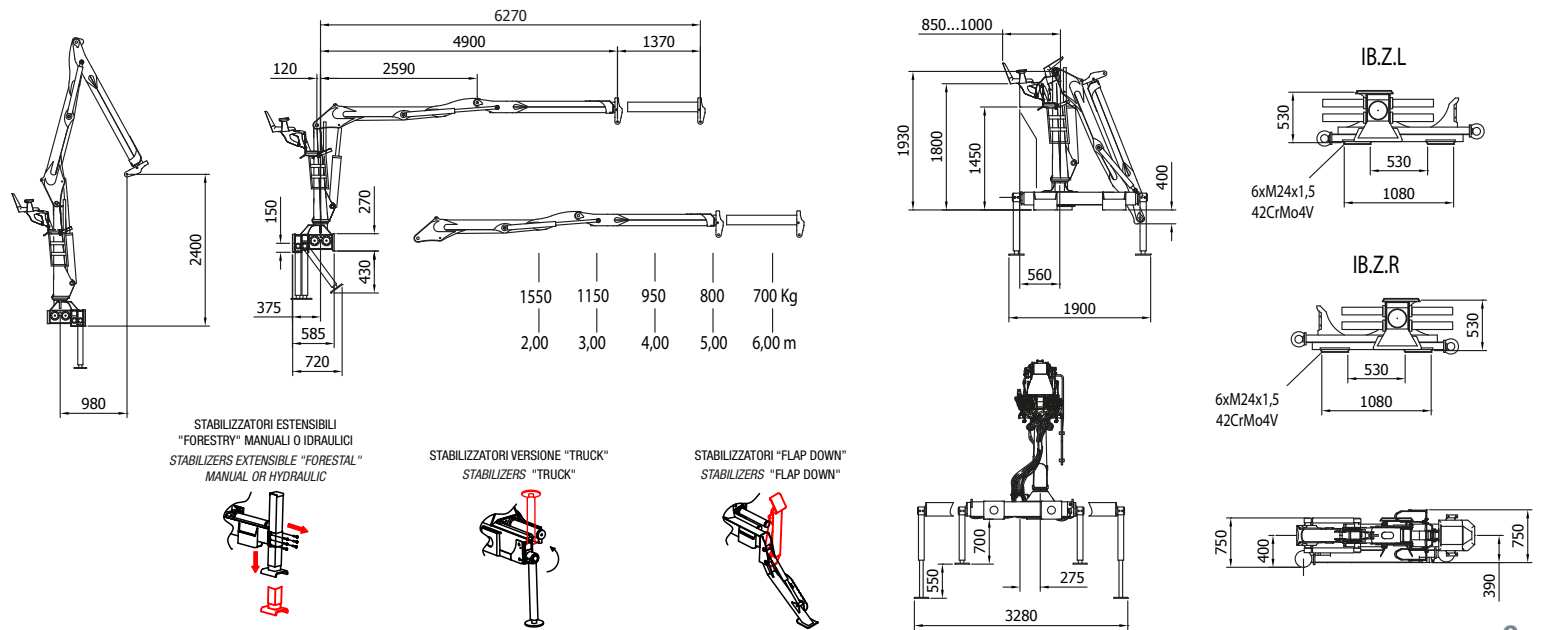
CARATTERISTICHE TECNICHE / Technical features	IB35Z.60
Momento di carico netto / Max moment	31 KNm
Coppia di rotazione netto / Net rotation torque	13 KNm
Angolo di rotazione / Rotation angle	400°
Sbraccio massimo / Max overhang	6,00 m
Pressione di esercizio / Service pressure	190 Bar
Portata raccomandata della pompa / Recommended flow of the pump	30 lt/min
Peso del caricatore \ gru (escluso attrezzature terminali) Weight of the crane (without terminal equipments)	700 Kg





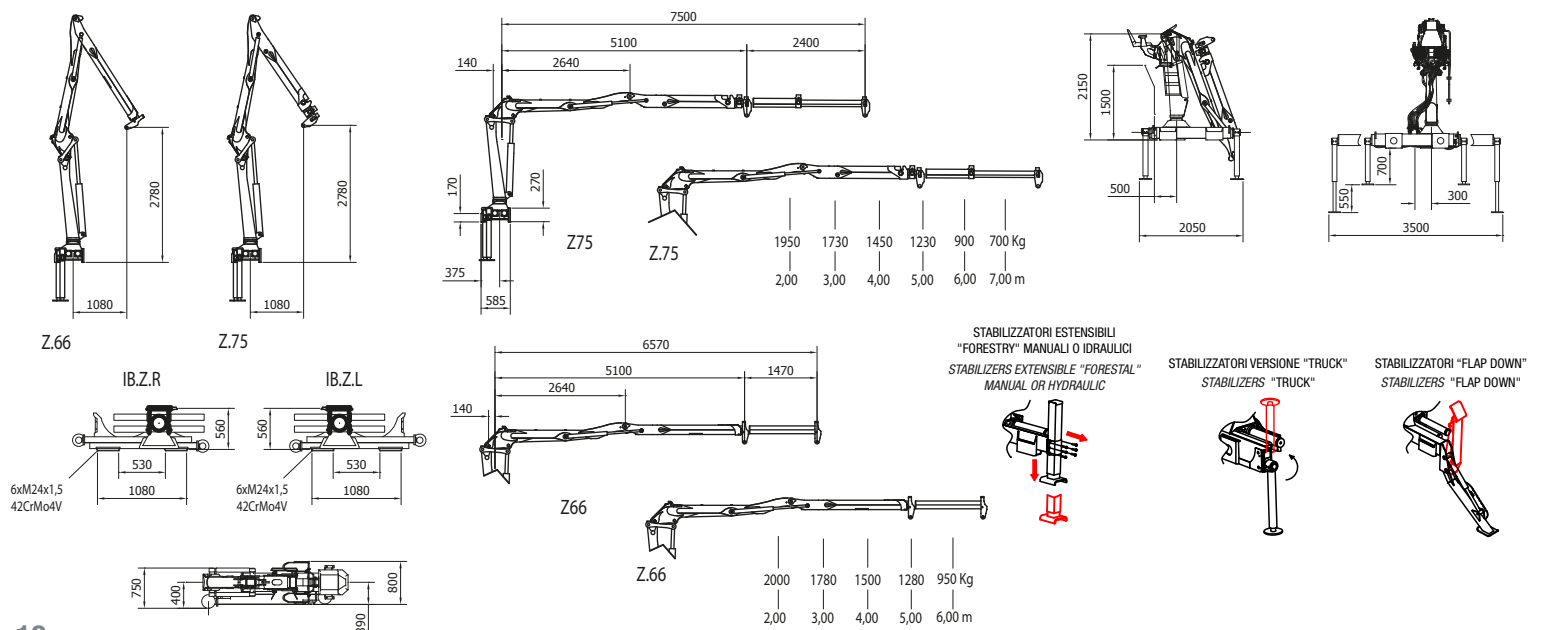
CARATTERISTICHE TECNICHE / Technical features	<b>IB4600.Z63</b>
Momento di carico netto / Max moment	43 KNm
Coppia di rotazione netto / Net rotation torque	17 KNm
Angolo di rotazione / Rotation angle	400°
Sbraccio massimo / Max overhang	6,30 m
Pressione di esercizio / Service pressure	200 Bar
Portata raccomandata della pompa / Recommended flow of the pump	35 lt/ 45 min
Peso del caricatore \ gru (escluso attrezzature terminali) Weight of the crane (without terminal equipments)	980 KG

# IB4600



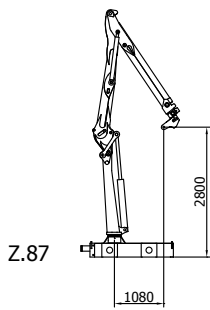
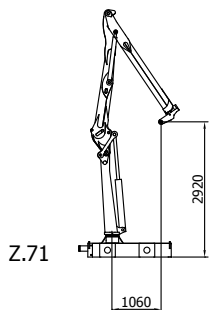
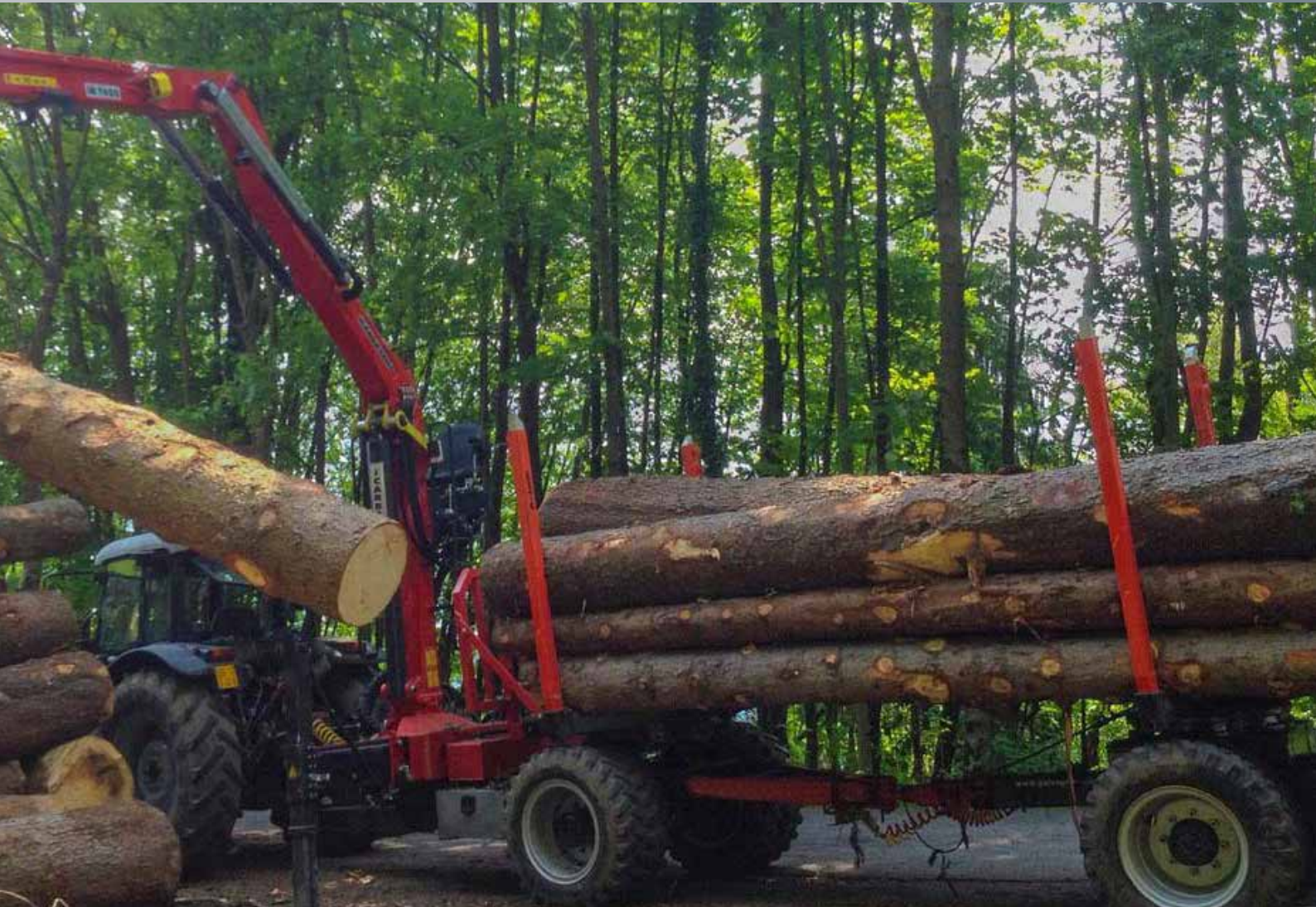
# IB6600

CARATTERISTICHE TECNICHE / Technical features	IB6600.Z65	IB6600.Z75
Momento di carico netto / Max moment	64 KNm	62 KNm
Coppia di rotazione netto / Net rotation torque	19 KNm	19 KNm
Angolo di rotazione / Rotation angle	400°	400°
Sbraccio massimo / Max overhang	6,50 m	7,50 m
Pressione di esercizio / Service pressure	210 Bar	210 Bar
Portata raccomandata della pompa 1k o 2k Recommended flow of the pump 1k o 2k	1x70 lt/min - 2x45 lt/min	1x70 lt/min - 2x45 lt/min
Peso del caricatore \ gru (escluso attrezzature terminali) Weight of the crane (without terminal equipments)	1250 Kg	1350 Kg

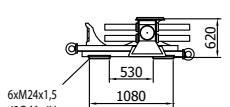


CARATTERISTICHE TECNICHE / Technical features	IB7600.Z71	IB7600.Z87
Momento di carico netto / Max moment	73 KNm	71 KNm
Coppia di rotazione netto / Net rotation torque	20 KNm	20 KNm
Angolo di rotazione / Rotation angle	400°	400°
Sbraccio massimo / Max overhang	7,10 m	8,70 m
Pressione di esercizio / Service pressure	220 Bar	220 Bar
Portata raccomandata della pompa 1k o 2k Recommended flow of the pump 1k o 2k	1x80 lt/min - 2x55 lt/min	1x80 lt/min - 2x55 lt/min
Peso del caricatore \ gru (escluso attrezzature terminali) Weight of the crane (without terminal equipments)	1700 Kg	1800 Kg

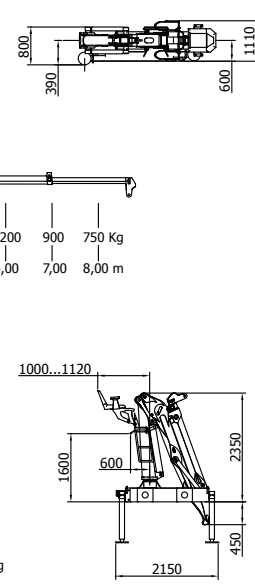
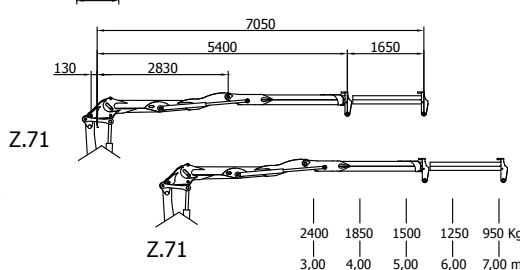
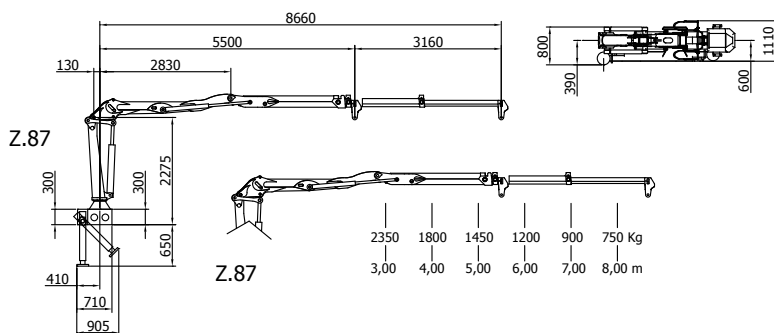
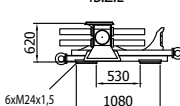
# IB7600



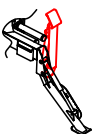
IB.Z.R



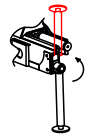
IB.Z.L



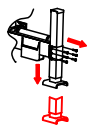
STABILIZZATORI "FLAP DOWN"  
STABILIZERS "FLAP DOWN"



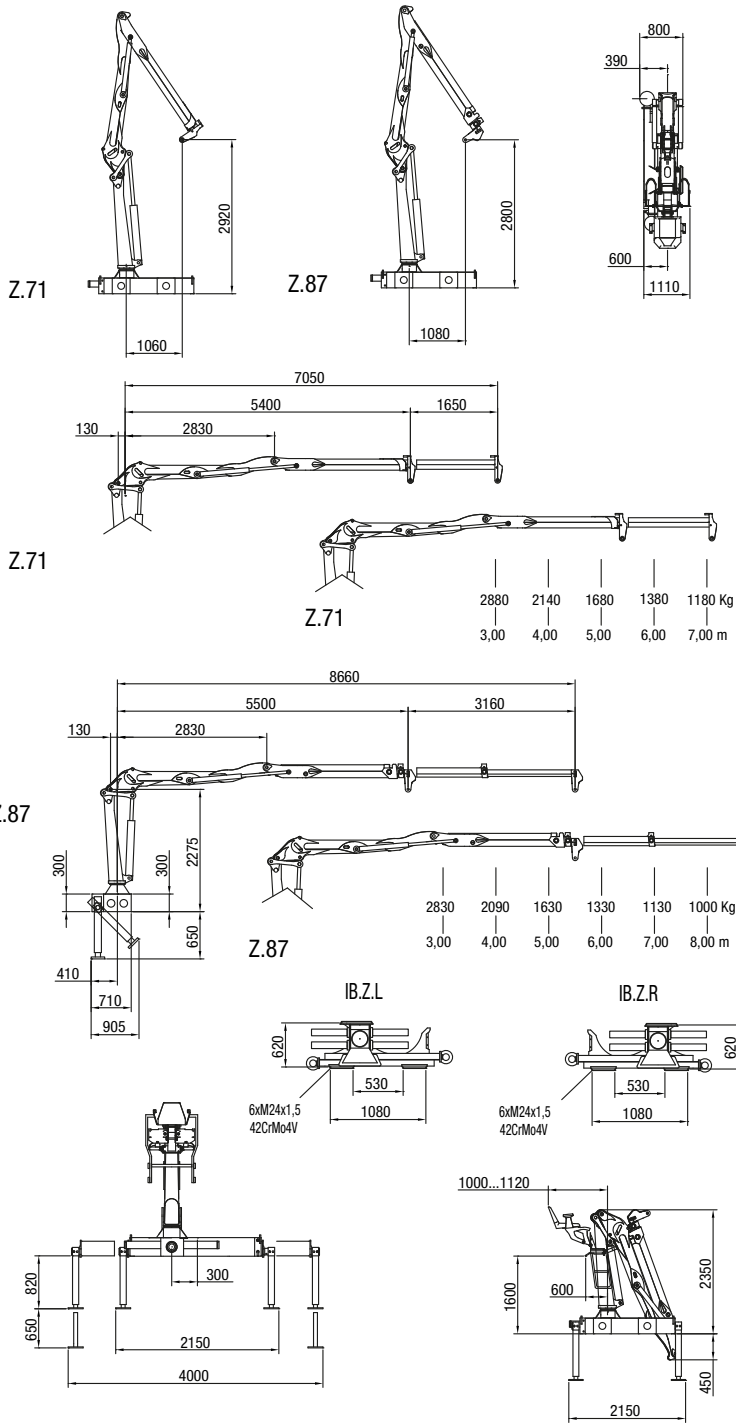
STABILIZZATORI VERSIONE "TRUCK"  
STABILIZERS "TRUCK"



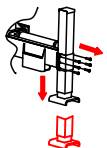
STABILIZZATORI ESTENSIBILI  
"FORESTRY" MANUALI O IDRAULICI  
STABILIZERS EXTENSIBLE "FORESTAL"  
MANUAL OR HYDRAULIC



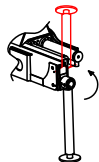
# IB9000



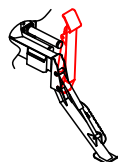
STABILIZZATORI ESTENSIBILI  
"FORESTRY" MANUALI O IDRAULICI  
STABILIZERS EXTENSIBLE "FORESTAL"  
MANUAL OR HYDRAULIC



STABILIZZATORI VERSIONE "TRUCK"  
STABILIZERS "TRUCK"



STABILIZZATORI "FLAP DOWN"  
STABILIZERS "FLAP DOWN"





CARATTERISTICHE TECNICHE / Technical features	IB9000.Z71	IB9000.Z87
Momento di carico netto / Max moment	86 KNm	85 KNm
Coppia di rotazione netto / Net rotation torque	24 KNm	24 KNm
Angolo di rotazione / Rotation angle	400°	400°
Sbraccio massimo / Max overhang	7,10 m	8,70 m
Pressione di esercizio / Service pressure	220 Bar	220 Bar
Portata raccomandata della pompa 1k o 2 Recommended flow of the pump 1k o 2k	1x90 lt/min 2x65 lt/min	1x90 lt/min 2x65 lt/min
Peso del caricatore \ gru (escluso attrezzature terminali) Weight of the crane (without terminal equipments)	1900 Kg	2000Kg



**DOMEX<sup>®</sup>**  
HIGH STRENGTH STEEL

**STRENX<sup>™</sup>**  
PERFORMANCE STEEL

Caricatori con braccio diritto a "L" per ottimizzare gli spazi di carico sul rimorchio. Dotati di lunghi bracci, sono costruiti con acciai di altissima qualità DOMEX 700 per garantire la massima produttività nelle più estreme condizioni di lavoro.

Collaudati per sopportare lavori pesanti con assoluta affidabilità nel corso degli anni.

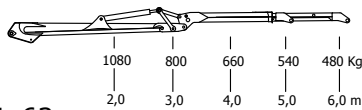
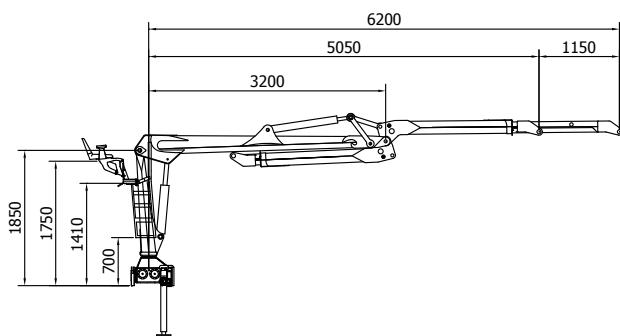
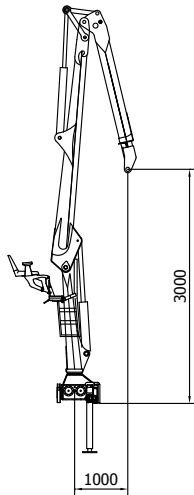
## SERIES L



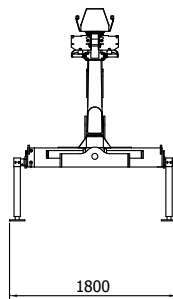
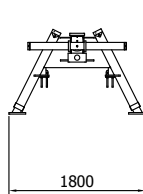
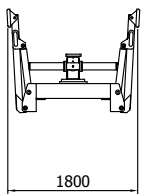
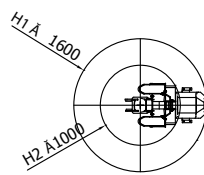
*Loaders with straight, L-shaped jib, to optimize the loading spaces on the trailer. Equipped with long jibs, it is constructed with high quality steels DOMEX 700 in order to ensure maximum yield in the hardest working conditions. They have been tested to support heavy-duty works ensuring great reliability over time.*



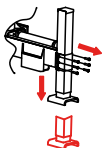
# IB2800



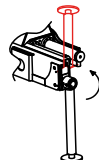
L.62



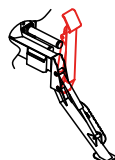
STABILIZZATORI ESTENSIBILI  
"FORESTRY" MANUALI O IDRAULICI  
STABILIZERS EXTENSIBLE "FORESTAL"  
MANUAL OR HYDRAULIC



STABILIZZATORI VERSIONE "TRUCK"  
STABILIZERS "TRUCK"



STABILIZZATORI "FLAP DOWN"  
STABILIZERS "FLAP DOWN"





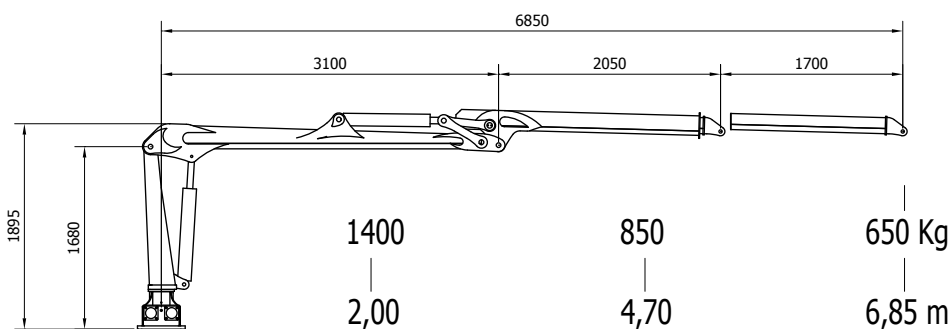


#### CARATTERISTICHE TECNICHE / Technical features

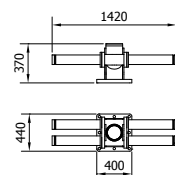
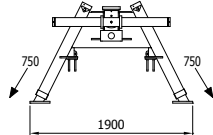
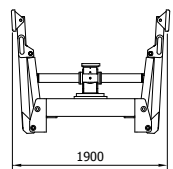
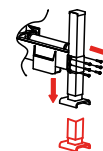
CARATTERISTICHE TECNICHE / Technical features	IB2800.L62
Momento di carico netto / Max moment	31 KNm
Coppia di rotazione netto / Net rotation torque	13 KNm
Angolo di rotazione / Rotation angle	400°
Sbraccio massimo / Max overhang	6,20 m
Pressione di esercizio / Service pressure	180 Bar
Portata raccomandata della pompa / Recommended flow of the pump	30 lt/min
Peso del caricatore / gru (escluso attrezzature terminali) <i>Weight of the crane (without terminal equipments)</i>	680 Kg

# IB4800

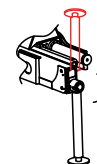
CARATTERISTICHE TECNICHE / Technical features	IB4800.L69
Momento di carico netto / Max moment	48 KNm
Coppia di rotazione netto / Net rotation torque	18 KNm
Angolo di rotazione / Rotation angle	400°
Sbraccio massimo / Max overhang	6,85 m
Pressione di esercizio / Service pressure	200 Bar
Portata raccomandata della pompa / Recommended flow of the pump	1x45 lt/min
Peso del caricatore / gru (escluso attrezzature terminali) <i>Weight of the crane (without terminal equipments)</i>	950 Kg



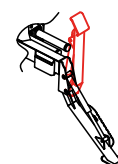
STABILIZZATORI ESTENSIBILI  
"FORESTRY" MANUALI O IDRAULICI  
STABILIZERS EXTENSIBLE "FORESTAL"  
MANUAL OR HYDRAULIC



STABILIZZATORI VERSIONE "TRUCK"  
STABILIZERS "TRUCK"

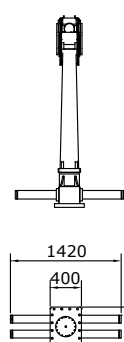
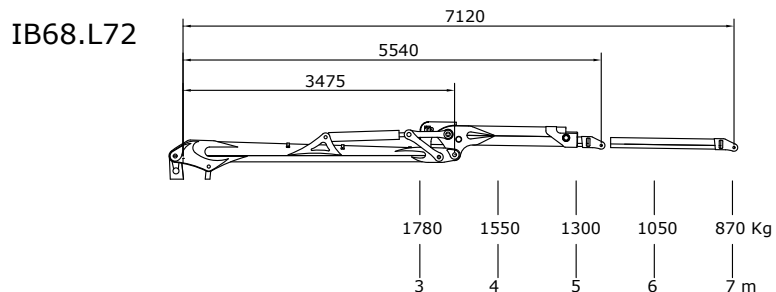
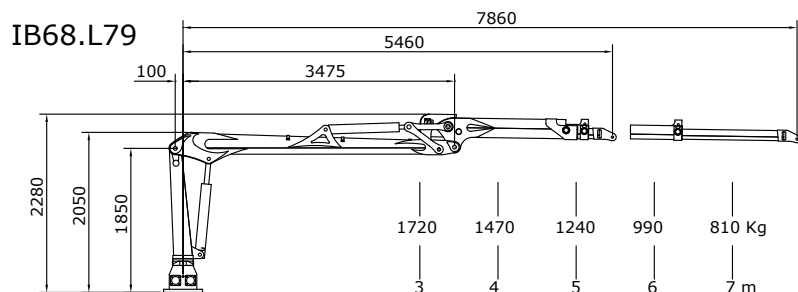


STABILIZZATORI "FLAP DOWN"  
STABILIZERS "FLAP DOWN"

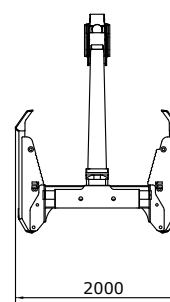
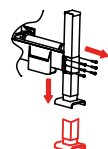


CARATTERISTICHE TECNICHE / Technical features	IB6800.L72	IB6800.L79
Momento di carico netto / Max moment	65 KNm	60 KNm
Coppia di rotazione netto / Net rotation torque	19 KNm	19 KNm
Angolo di rotazione / Rotation angle	400°	400°
Sbraccio massimo / Max overhang	7,20 m	7,90 m
Pressione di esercizio / Service pressure	210 Bar	210 Bar
Portata raccomandata della pompa 1k o 2k Recommended flow of the pump 1k o 2k	1x70 lt/min - 2x45 lt/min	1x70 lt/min 2x45 lt/min
Peso del caricatore / gru (escluso attrezzature terminali) Weight of the crane (without terminal equipments)	1400 Kg	1500 Kg

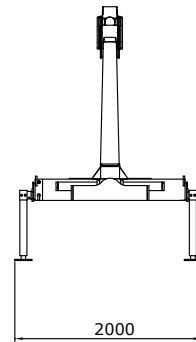
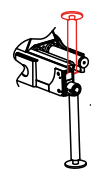
# IB6800



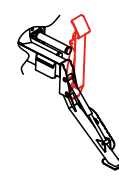
STABILIZZATORI ESTENSIBILI  
"FORESTRY" MANUALI O IDRAULICI  
STABILIZERS EXTENSIBLE "FORESTAL"  
MANUAL OR HYDRAULIC



STABILIZZATORI VERSIONE "TRUCK"  
STABILIZERS "TRUCK"

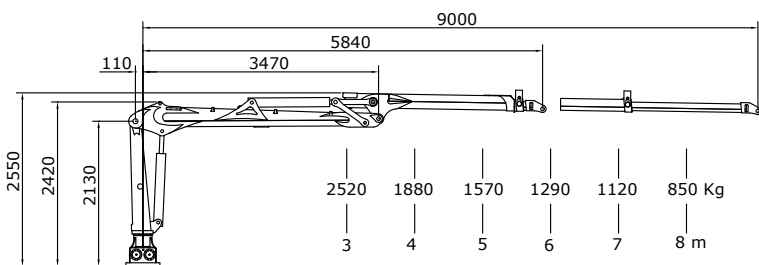


STABILIZZATORI "FLAP DOWN"  
STABILIZERS "FLAP DOWN"

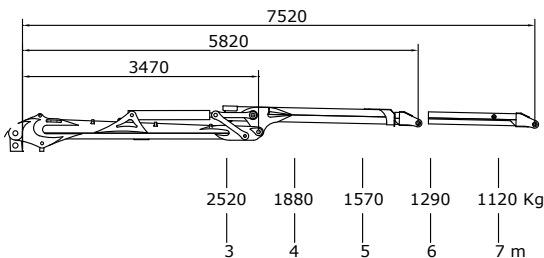


# IB7800

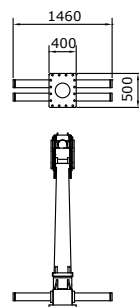
CARATTERISTICHE TECNICHE / Technical features	IB7800.L76	IB7800.L90
Momento di carico netto / Max moment	82 KNm	78 KNm
Coppia di rotazione netto / Net rotation torque	20 KNm	20 KNm
Angolo di rotazione / Rotation angle	400°	400°
Sbraccio massimo / Max overhang	7,60 m	9,00 m
Pressione di esercizio / Service pressure	220 Bar	220 Bar
Portata raccomandata della pompa 1k o 2k Recommended flow of the pump 1k o 2k	1x80 lt/min 2x55 lt/min	1x80 lt/min 2x55 lt/min
Peso del caricatore \ gru (escluso attrezzature terminali) Weight of the crane (without terminal equipments)	1800 Kg	1950 Kg



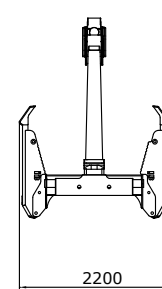
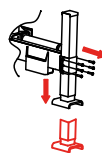
IB78.L90



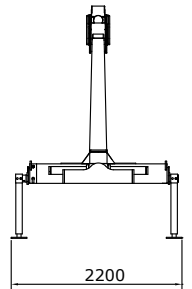
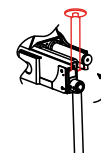
IB78.L76



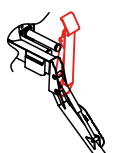
STABILIZZATORI ESTENSIBILI  
"FORESTRY" MANUALI O IDRAULICI  
STABILIZERS EXTENSIBLE "FORESTAL"  
MANUAL OR HYDRAULIC



STABILIZZATORI VERSIONE "TRUCK"  
STABILIZERS "TRUCK"

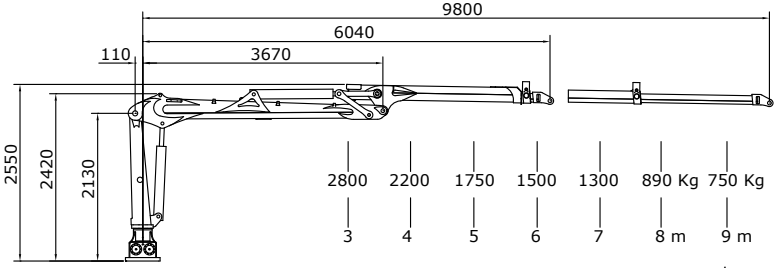


STABILIZZATORI "FLAP DOWN"  
STABILIZERS "FLAP DOWN"

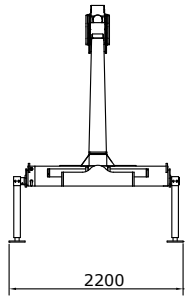
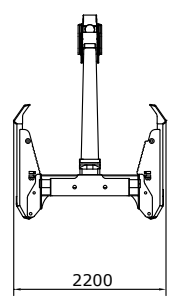
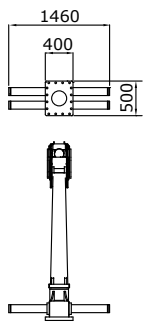


CARATTERISTICHE TECNICHE / Technical features	IB9800.L98
Momento di carico netto / Max moment	92 KNm
Coppia di rotazione netto / Net rotation torque	24 KNm
Angolo di rotazione / Rotation angle	400°
Sbraccio massimo / Max overhang	9,80 m
Pressione di esercizio / Service pressure	220 Bar
Portata raccomandata della pompa 1k o 2k Recommended flow of the pump 1k o 2k	1x90 lt/min - 2x65 lt/min
Peso del caricatore \ gru (escluso attrezzature terminali) Weight of the crane (without terminal equipments)	2200 Kg

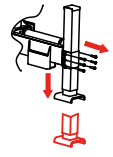
# IB9800



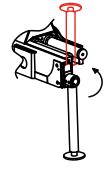
IB9800.L98



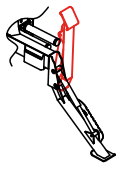
STABILIZZATORI ESTENSIBILI  
"FORESTRY" MANUALI O IDRAULICI  
STABILIZERS EXTENSIBLE "FORESTAL"  
MANUAL OR HYDRAULIC



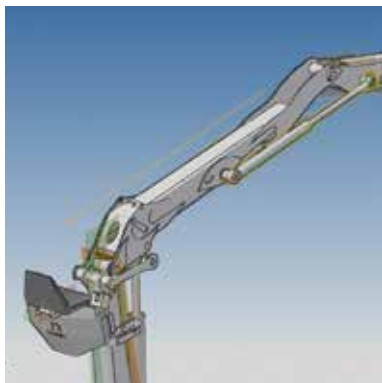
STABILIZZATORI VERSIONE "TRUCK"  
STABILIZERS "TRUCK"



STABILIZZATORI "FLAP DOWN"  
STABILIZERS "FLAP DOWN"



# ACCESSORI ACCESSORIES



Progetto e sviluppo utilizzando i più avanzati sistemi di disegno 3D.  
*Planning and project development using the latest generation 3D design systems.*



Pignone colonna di grandi dimensioni, costruito con i migliori acciai e dentatura temperata ad induzione, robusti cuscinetti autocentranti, doppie aste a cremagliera e canne di rotazione cromate internamente.  
*Pinion for large size column made by using best quality steel and induction hardened gear tooth, robust self centring bearings, double rack rods and tubes of rotation internally chrome.*



Potente sistema di rotazione a doppia cremagliera in bagno d'olio che permette movimenti veloci con la massima precisione, con sistema di smorzamento di fine corsa.  
*Powerful double track oil-bath rotation system which allows for fast movements with the utmost precision. End of stroke damping system.*



Le nostre macchine sono costruite interamente con i migliori acciai svedesi ssab, domex, strenx e weldox.  
*Our machines are totally made of the best SSAB, DOMEX, STRENX and WELDOX Swedish steel.*



Perneria rettificata di grandi dimensioni, boccole in bronzo alta qualità con canali di distribuzione del grasso che permettono di aumentare i cicli di lavoro della macchina e riducendone l'usura.  
*Large size grinded pins and bolts, high quality bronze bushings with canals distribution fat which allow the number of working cycles of the machine to be increased, thus reducing its wear.*



Sistema con biella di potenza per aumentare la forza di sollevamento nel più ampio raggio d'azione.  
*System with driving connecting rod to increase the lifting power for the widest range of action.*



Tubazioni dei bracci internamente protette con sistema a rapida sostituzione ed innovazione nell'ammortizzamento catena per evitare le rotture.

*Internally protected jib piping with fast system to replace them and innovation shock absorbing for avoid breakage of the chain.*



Distributore rotante centrale alla colonna per passaggio interno impianto idraulico e per evitare la rottura delle tubazioni flessibili.

*Rotating distributor centrally to the column for internal passage hydraulic system to avoid breakage or the pipes*



Distributori idraulici di comando proporzionali e compensati per effettuare contemporaneamente il maggior numero di movimenti.

*Compensating hydraulic distributors with proportional control to carry out the greatest number of movements simultaneously.*



Tubazioni parker e raccordi girevoli brevettati a sgancio rapido per una superiore durata nel tempo dei tubi flessibili e per una manutenzione semplice e veloce.

*Parker pipe fittings and patented swivel connectors with quick release coupling to ensure longer lasting life of the flexible pipes as well as easy and quick maintenance.*



Scaletta di accesso alla postazione di comando con maniglie di sicurezza.

*Ladder for ascending to driver's seat with safety handles.*



Postazione di comando confortevole ed ergonomica, con leve a cloche pieghevoli e comandi a pedale. Protezioni di sicurezza per leve di comando.

*comfortable and ergonomic driver's seat equipped with joystick levers, repliable and foot control levers security protection for control levers*

# ACCESSORI ACCESSORIES



Posto guida con distributore servo-assistito e Joystick servo-idraulici.  
*Driver's seat with servo-hydraulic valve and joystick.*



Postazione di comando con Joystick proporzionali Parker o Danfoss per montaggio esterno e schermatura contro interferenze.  
*Driver's seat with proportional joysticks to be assembled externally and with anti-interference shielding.*



Centralina elettronica Parker o Danfoss programmabile per gestione completa dei comandi.  
*Parker or danfoss programmable control unit for full management of the commands.*



Radiocomando a richiesta per effettuare ogni operazione in sicurezza. Disponibile a leve o con Joystick a 3 assi.  
*Upon request, all loaders can be provided with a remote control to carry out all operations independently from the position of the crane. Available with levers or 3 axes joysticks*



Posto guida a terra con distributore elettroidraulico.  
*Driver's seat on the floor with electro-hydraulic distributor.*



Postazione di comando con cappottina di protezione.  
*Driver's seat with protective cover.*





Postazione di comando con cabina protetta ad elevata visibilità dotata di tutti i comfort di serie e rialzabile idraulicamente. Disponibile anche la versione sx.

*Driver's seat with high visibility protected cabin equipped with all modern conveniences as standard supply that can be hydraulically lifted up. Also available version left*



Scambiatore di calore automatico con centralina proporzionale per mantenere il circuito idraulico a temperatura costante.

*Automatic heat exchanger with proportional control unit to maintain the hydraulic circuit at a constant temperature.*



Sistema innovativo brevettato di antipendolo con tubazioni protette.

*Patented innovative anti-swinging system with protected piping.*



Equipaggiamento di sicurezza con manometro ad indicazione del sovraccarico, dispositivo di arresto d'emergenza e protezioni per leve di comando.

*Safety equipment with manometer indicates overload, emergency stop device and protection for control levers.*



Fari di lavoro a LED protetti ed azionabili dal posto di comando

*Protected working lights which can be activated from the driver's seat.*



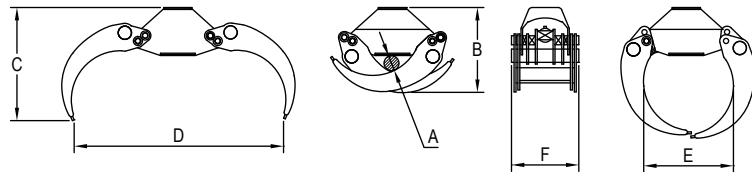
Sistema innovativo di pesatura dinamica con macchina in movimento e massima resistenza agli urti.

*Innovative system of dynamic weighing when machine is working and maximum impact resistance*

# PINZE E ROTATORI

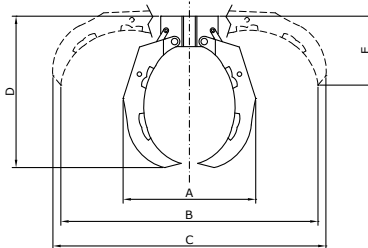
## GRAPPLES AND ROTATORS

**PINZA PER TRONCHI** Disponibili anche in versione BIO per cippatori  
**LOG GRAPPLES** Available also in BIO version for chippers



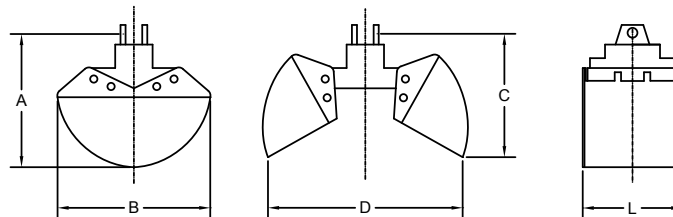
MODELLO TYPE	A mm	B mm	C mm	D mm	E mm	F mm	Ton	PESO Kg WEIGHT Kg	AREA M <sup>2</sup> AREA M <sup>2</sup>	PORTATA Kg FLOW Kg	PRESSIONE Bar PRESSURE Bar
IB 150 (IB 480)	40	435	600	1000	435	330	<1	50	0,15	700	160
IB 160 (IB 500)	40	435	600	1000	435	330	1	60	0,15	1000	180
IB 200 (IB 520)	60	455	680	1200	550	360	2-3	75	0,21	1500	200
IB 250 (IB 530)	90	520	730	1300	590	425	3-4	120	0,23	2000	200
IB 300 (IB 540)	115	540	800	1500	660	500	4-7	160	0,28	3000	200
IB 350 (IB 550)	140	600	840	1600	690	505	7-12	200	0,33	3500	200
IB 400 (IB 600)	150	650	880	1850	760	520	12 +	240	0,37	4000	200

**POLIPO PER LEGNA / WOOD BUCKET** Supporto anteriore per braccio a riposo



MODELLO TYPE	DENTI TEETH	CAPACITÀ/LT CAPACITY/LT	PESO/Kg WEIGHT Kg	PRESSIONE Bar PRESSURE Bar	A	B	C	D	E	FxL
IB 120/5	5	120	130	200	780	1400	1520	780	500	25x30
IB 285/5	5	285	220	200	950	1805	1930	1100	645	30x40

**BENNA MORDENTE / GRAPPLE**



MODELLO TYPE	CAPACITÀ/LT CAPACITY/LT	PESO/Kg WEIGHT Kg	PRESSIONE Bar PRESSURE Bar	A mm	B mm	C mm	D mm	L mm
BO 40	125	140	200	670	830	530	1200	430
BO 50	150	150	200	670	830	530	1200	530
BO 60	175	160	200	670	830	530	1200	630
BO 70	200	190	200	670	830	530	1200	730
BO 80	225	200	200	670	830	530	1200	830

**ROTATORE CON ALBERO  
ROTATOR SHAFT**



PORTATA/Kg  
CAPACITY Kg

- 1000 (1t)
- 3000 (3t)
- 6000 (6t)
- 8000 (8t)

**ROTATORE FLANGIATO  
ROTATOR FLANGE**



PORTATA/Kg  
CAPACITY Kg

- 6000 (6t)
- 10000 (10t)



**YOUR POWER  
IS IN OUR ARMS**



[www.icarbazzoli.com](http://www.icarbazzoli.com)  
[www.caricatoriforestali.com](http://www.caricatoriforestali.com)



**YOUR POWER  
IS IN OUR ARMS**



**ICAR BAZZOLI ENZO srl**  
Via Medole, 29  
46040 Rebecco di Guidizzolo (MN) - ITALY  
T +39 (0) 376 81.91.96  
F +39 (0) 376 81.95.20  
icarbazzoli@icarbazzoli.com  
www.icarbazzoli.com  
www.caricatoriforestali.com

